

# ***IMEA***

---

INDIANA MUNICIPAL ELECTRIC ASSOCIATION



## ***Power Connection***

**Rethinking Safety Performance  
Metrics in the Utility Industry**

IMEA

**Indiana Municipal  
Electric Association**

## A GUIDE TO IMEA SERVICES

Rethinking Safety Performance Methods in  
the Utility Industry (Continued, Page 3) **01**

Rethinking Safety Performance Methods in  
the Utility Industry **03**

Very Different Safety Programs **05**

Are All Injuries Preventable? **07**

The Lost Time Injury Free Days Sign **09**

# National Lineman Appreciation Day

**April 18, 2022**

2022 IMEA Workshop Calendar **11**

Benefits of Municipal Utilities **13**

Preparing for the future : Careers in  
Public Power **15**

Save the Date! 2022 IMEA Annual  
Meeting & Vendor Expo **17**

**Power Connection  
Quarterly Safety Tip**

*Safety is a full-time job, don't make it a  
part-time practice.*







# POWER CONNECTION

Indiana Municipal Electric Association

ISSUE 1 2022

## *Rethinking Safety Performance Metrics in the Utility Industry*

When it comes to measuring safety performance in the utility industry, there are many long-held beliefs, including the ideas that safety performance ought to be measured through leading and lagging indicators, that metrics support improvement through the “what gets measured, gets done” philosophy, and that if metrics are moving the right way, the company is getting safer. But, what if all those long-held beliefs have flaws, or, at least, limitations? The re-thinking of traditional approaches to safety performance and metrics is reflected in the increasing number of articles challenging the Heinrich Safety Pyramid. Many of us were trained in the concepts behind the safety pyramid and the idea that working on near-misses and minor injuries would reduce the number of incidents, shrink the pyramid, and decrease the number of fatalities. The problem? Current data shows that it’s not working. While the utility industry is reducing the bottom of the pyramid (the minor injuries), the number of fatalities is increasing – we’re currently experiencing one of the highest fatality rates ever at 19.2 per 100,000 workers per the US Dept. of Labor Bureau and Statistics.

We believe no industry can be described with one safety pyramid, because **industrial operations are a compilation of many different activities with different safety pyramids.**

For instance, some activities, like stuffing envelopes, bring with it the risk of very minor injuries (a paper cut), but no number of paper cuts will ever give rise to a fatality. On the other end of the spectrum, some activities, like launching astronauts into space, will either go perfectly or, in the event of a problem, experience a high probability of fatalities. Every industry has activities where the safety pyramid is wide and not very tall, and other activities where the pyramid is tall and skinny. As a result, it’s illogical for an organization, like NASA, to think that by tracking minor injuries (first-aid visits requiring band-aids) they will make space flight safer.

*(Continued, Page 3)*

### ALPHA ENGINEERING, INC. CONSULTING ENGINEERS

- RENEWABLE ENERGY
- SCADA & COMMUNICATIONS
- SYSTEM PLANNING AND STUDIES
- CONSTRUCTION MANAGEMENT
- MAPPING AND CAD SERVICES
- ARC FLASH EVALUATION
- GIS/FIELD INVENTORY
- SUBSTATION DESIGN
- POWER QUALITY
- LINE DESIGN
- SMART GRID

alphaeng.us  
317-273-9841





Automated  
Energy

**Boosting the brain power of the smart grid™**

## Here for Indiana

Let Automated Energy help you further leverage your AMI investment with our industry-leading Customer Engagement Applications.

Whether you need Residential and Small Commercial customer engagement tools or powerful load profile analytic tools for your Large C&I customers, Automated Energy has what you need!



**Better power through better data**

Call Cody Graves at **866-421-1234** or  
email at **[cgraves@automatedenergy.com](mailto:cgraves@automatedenergy.com)**



# Rethinking Safety Performance Metrics in the Utility Industry

(Continued)

For the foreseeable future, heavy industry is going to look at traditional safety metrics, like medical aids or lost-time incident frequency, even though not all incidents are created equally. Setting aside the metrics for a minute, at a human level, an employee experiencing an electrical switching incident is different than an employee who engages in manual labor one day and wakes up the next day with a sore shoulder. As people who manage our own weekend-warrior aches we know these events are not the same, even though both show up as an incident ending the “incident-free days” record. When it comes to the question of which business is safer, most of us would not be bothered about working in a company where the nature of injuries amounted to occasional over-exertion. We would be cautious and more diligent working in operations that posed greater risks.



At the same time, having a “target zero” injury philosophy feels compelling to many. It’s aspirational and suggests we are putting “safety first”. But what does a low incident rate really tell us? Many of us will remember the Deepwater Horizon oil rig disaster in 2010 which killed 11, injured 17, and resulted in one of the largest oil spills in history. What fewer people know is that managers from BP and Transocean (the rig operators) were on the rig the day of the disaster to celebrate 7 years of injury-free safety performance. That’s compelling.

We believe the bigger issue is that being safe at the macro level and being safe at the micro level are very different.

Real safety performance requires a variety of approaches, and low lost-time injury rates alone cannot be counted on to be a good indicator of how safe a company is. We believe it’s fair to suggest that poor safety incident rates do show that a company has a problem, but the converse is not true. In the case of the Deepwater Horizon, low worker injury rates did not mean the operation was safe. Part of the apparent disconnect between traditional safety stats and holistic safety performance comes from the way in which some companies manage safety statistics, such as aggressively using light duty programs to alter the perception of safety performance and metrics. However, **we believe the bigger issue is that being safe at the macro level and being safe at the micro level are very different.**



**Spectrum**  
ENGINEERING CORPORATION  
An EN Engineering Company



*Delivering excellENce in Electric Power,  
Telecommunications Engineering, and Consulting  
Services*

[spectrumeng.com](http://spectrumeng.com)  
Don Gibson  
[d.gibson@enengineering.com](mailto:d.gibson@enengineering.com)  
317-671-7293

Substation design	FTTx Design
Automation	Integrity
Relay upgrades	Microgrid Planning
System studies	T&D Engineering



# Skilled.

DECADES OF EXPERIENCE  
DEVOTED TO YOUR SAFETY.

## **ABOUT THE IMEA**

IMEA has operated as the statewide service association representing the issues and concerns of municipally owned and operated electric utilities while promoting the benefits and public power business model since 1941.



# Very Different Safety Programs

A growing number of companies are increasing their focus on Serious Injury & Fatality (SIF) prevention programs. These programs recognize the difference between a recordable injury, like a sore muscle, and a near-miss, resulting in no injury but one which could have killed somebody, if not for a little good luck. This trend is viewed very positively by many as it lines up with our natural view of focusing on what's really important. However, we suggest that many still feel conflicted – on one hand, it's acceptable to say SIF incidents require more attention, but it's a bit taboo to describe any injury as not important. Some companies embrace this concept of significantly different safety programs. For instance, oil and gas distribution and chemical companies talk about “Process Safety” and “Worker Safety”. Process Safety focuses on the approaches to making sure that oil, gas, and dangerous chemicals stay in the pipelines, tanks, and vessels they are supposed to be in and don't explode or expose people to toxins. Worker Safety focuses on making sure that employees can and do execute their daily activities without injuring themselves or their co-workers with vehicles, tools, PPE or procedural lapses.

**One of the challenges is that safety programs targeting different parts of the safety equation, whether it's SIF programs and ergonomics or Process and Worker Safety, are not perfectly discrete, they overlap.** However, we see trends which are worth considering.

- ❑ Most companies direct the bulk of their safety efforts at front-line employees. We routinely hear management say, “We need to get employees on board with safety”.
- ❑ While the desire to focus efforts on front-line employees feels logical, given they are exposed to the greatest risk, we observe that the role of supervision and management is often under-appreciated. This is especially problematic given that many of the more serious SIF conditions involve flawed decision-making at multiple levels, from front-line supervision to more senior management.
- ❑ The tendency to heavily focus on safety messaging with front-line employees, in the spirit of getting employees to be more safety-minded, can actually backfire:

- We see companies sharing descriptions of incidents at safety meetings, which makes sense at some level. However, when the nature of many of the incidents are trivial, such as paper cuts and spilled coffee, it gets in the way of the valuable conversations regarding front-line employees exposed to high-risk work at the job site.

- We hear management say, “We need to get employees engaged and reporting near misses”, and then the same managers proceed straight to discipline after having reported a near miss without full analysis of the potential incident.

This leads to one of the major dilemmas we see in safety today. While companies focus their safety programs on front-line employees and management wants incident rates to fall, many managers don't really want to do the things it would take to eliminate root causes and are uncomfortable talking about safety performance and crossing cultural taboos.







**Mike Coomes**

VP Southern Region

(317) 281-5561

mike\_coomes@uscco.com

**Mark Nuce**

Account Manger

(317) 417-7325

mark\_nuce@uscco.com

**Jerrod Devers**

Account Manager

(317) 281-5904

jerrod\_devers@uscco.com

**Ed Bowman**

Tech. Solutions Consultant

(317) 671-6552

Ed\_bowman@uscco.com

- 24/7 Emergency Response
- Inventory Management and Barcoding
- Project Materials Management and Logistics
- Substation, Transmission and Distribution packages
- Complete Tool Repair and Maintenance service
- Rubber Goods Testing and Certification
- Technical Sales and Service





# Are All Injuries Preventable?

The question, “Are all injuries preventable” has become a common element of safety perception surveys. Like many who work in the world of safety improvement, we would confidently say, “Yes, all injuries are preventable”. We have never seen an incident where the investigation did not reveal places where somebody could not have prevented the incident by doing something differently. However, we also believe the question, “Are we willing to do what it takes to prevent all injuries and live with the consequences?” is just as, if not more, important. For example, in professional kitchens, knife cuts are a risk. It’s possible to eliminate the risk of knife cuts in professional kitchens by banning knives. However, most kitchens have decided that eliminating knives is not practical. Professional kitchens have taken steps to mitigate the risk of working with knives by developing good knife-handling skills and establishing good practices around walking with knives in the kitchen. In effect, the industry has made conscious decisions to not take the risk to zero. As a result, we will go out on a limb and predict that some good, well-trained chefs still nick a finger occasionally. Ultimately, it’s up to management to decide if they want to take the risk to zero. A well-known oil company famously banned “box cutters” from their operations, with the full understanding that it was going to make some activities more time-consuming as a result. Conversely, we still see companies where employees are put in a catch-22. In one example, employees are expected to wear gloves to prevent hand injuries, such as minor cuts, but their job requires a level of dexterity that the gloves don’t provide. This puts the employee in the position of having to choose between following the rules and not doing the work, or breaking the rules to get the work done.



---

We have never seen an incident where the investigation did not reveal places where somebody could not have prevented the incident by doing something differently. However, we also believe the question, ‘Are we willing to do what it takes to prevent all injuries and live with the consequences?’ is just as, if not more, important.

---

Shockingly, there are a number of managers and companies who still see this as a problem with the employees, when, in fact, it’s a management problem. Part of the problem is in how managers think about safety performance, and their conflict in not being prepared to take the risk to zero to achieve zero incidents on the low severity end of the range. We typically see committed managers who comfortably insist on Lock Out / Tag Out or confined space procedures, because of the proven impact on reducing SIF incidents. However, many managers will balk at banning shovels from the workplace, even though they leave employees exposed to a small level of risk. One of the biggest challenges around safety performance is making it possible for nuance and balance to enter the conversation around safety at the low end of the severity range. After all, if there are lots of injuries arising from employees digging holes with shovels, it may be appropriate to replace the shovel with a piece of equipment. If that rate is very low, using equipment may represent a bigger risk than the shovel. To find an example of a safety performance measure that completely lacks nuance, many companies only have to look at the front gate.

**TECH**  
PRODUCTS, INC.

**SIGNS, TAGS & MARKERS**

Everlast Pole Tags | Tech-3D Distribution Signs | Phase Markers

VM 1-16

20/140

195

33330

**1-800-221-1311**  
[www.TechProducts.com](http://www.TechProducts.com)

**MADE IN USA SINCE 1948**  
A VETERAN-OWNED BUSINESS



## *Improve restoration time from hours to minutes*

G&W Electric's model-based Fault Location, Isolation, and Service Restoration (FLISR) is a solution that automatically determines the location of a fault, automatically isolates the faulted area, and automatically restores power to as many customers as possible.

Advantages of model-based Single Phase FLISR:

- Increased Reliability Numbers (no 3-phase outages for 1-phase faults) – SAIDI & CAIDI go down
- Remote Monitoring and Control thanks to communication of field devices back to SCADA
- Speed of Restoration
- Ease of system expansion and/or changes
- Taking advantage of advanced applications combined with FLISR, e.g. Power Flow and Volt VAR

[www.gwelectric.com](http://www.gwelectric.com)



# SAFETY FIRST

00 000 00 000

DAYS HOURS MINUTES SECONDS

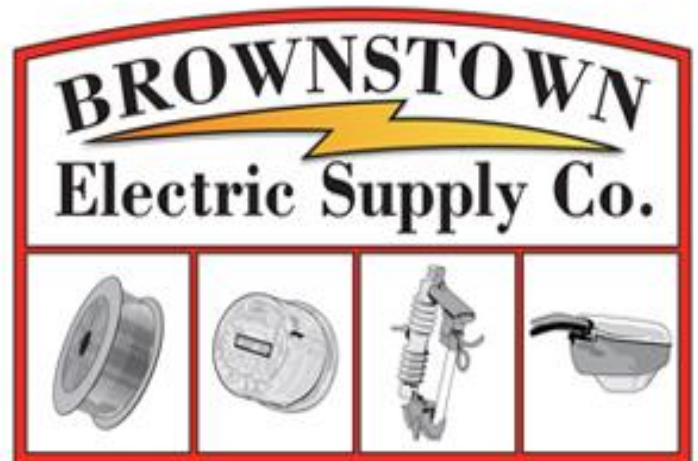
**THIS FACILITY HAS  
WORKED WITHOUT A LOST TIME  
ACCIDENT ON THE JOB**

**SAFETY BEGINS WITH YOU!**

## The “Lost Time Injury Free Days” Sign

Virtually everyone in industry has seen the sign at the front gate which shows the number of days the site has gone without a lost time injury. It’s supposed to remind employees to keep their mind on safety when they enter the site and demonstrate management’s focus on safety. But what does it really do? In many sites, particularly when the number of incident free days is high, it puts tremendous pressure on employees, supervisors, and managers to not allow an incident to become recordable. It increases pressure to not report and/or find creative ways to avoid triggering the definition of a recordable event. Unfortunately, that does not align with what people should be thinking about if they put safety and people first.

Also, that statistic does not tell anyone if the operation has some other, undermanaged risk factors that are on the verge of resulting in a disaster, like the 7-year incident-free record on the Deepwater Horizon.



**WHATEVER IT TAKES.**

That statistic does not tell anyone if the operation has some other, undermanaged risk factors that are on the verge of resulting in a disaster.

Written by Duncan Kerr (duncan@theengineroom.ca) Duncan Kerr is a managing partner at The Engine Room Consulting Group an Operational and Safety Performance Improvement Firm that accelerates organizational performance to achieve measurable business results. [www.theengineroom.ca](http://www.theengineroom.ca)

**Brownstown, IN  
Wabash, IN**

**[www.brownstown.com](http://www.brownstown.com)  
(800) 742-8492**



# Fiber Networks, Rural Broadband and Your Community

WESCO and Anixter provide best-in-class fiber and utility products from leading industry manufacturers and can help you navigate designing, building and deploying fiber optic networks. We are committed to providing utilities the products, services and expertise they need for successful rural broadband deployment.

Deploying a rural broadband network can be challenging, but WESCO and Anixter have the solutions to help you level the playing field. Our team is comprised of professionals with decades of experience and expertise in the broadband industry, and we have partnered with the top fiber and utility suppliers to provide the products, services, and solutions needed to successfully deploy fiber networks.

***Learn More: [info.wesco.com/your-trusted-partner-for-fiber-broadband-deployment](https://info.wesco.com/your-trusted-partner-for-fiber-broadband-deployment)***



9175 S. Innovation Dr | Daleville, IN 47334  
(800) 622-8769



# IMEA Workshop Calendar

# 2022

## *January*

- 12 Supervisory Development Series: Session One (Mishawaka)
- 26 Excavation Competent Person (Lebanon)

## *February*

- 8 & 9 Supervisor Safety (Lebanon)
- 16 Supervisory Development Series: Session two (Mishawaka)

## *March*

- 9 – 11 Apprentice Top-Out Exam #031918 (Scottsburg)
- 16 Supervisory Development Series: Session Three (Mishawaka)
- 21 – 25 IMEA 612 Intermediate Workshop #032320 (Scottsburg)

## *April*

- 4 - 8 IMEA 613 Advanced Workshop #031819 (Scottsburg)
- 12 - 13 Line Clearance Arborist Certification (Frankfort)
- 25 -29 IMEA 611 Basic Workshop #041921 (Scottsburg)

## *May*

- 2 - 13 IMEA 610 Wood Pole Climbing Workshop #050222 (Scottsburg)
- 24 - 26 IMEA 212 Transformer Theory & Connections (Scottsburg)

## *June*

- 7 - 8 Working it Hot - Insulate / Isolate (Scottsburg)

## *August*

- 22 - 9/2 IMEA 610 Wood Pole Climbing Workshop #082222 (Scottsburg)

## *September*

- 12 - 16 IMEA 613 Advanced Workshop #093019 (Scottsburg)
- 21 - 23 Apprentice Top-Out Exam #100118 (Scottsburg)
- 26 - 30 611 Basic Workshop #092721 (Scottsburg)

## *October*

- 11 - 13 IMEA Annual Meeting (TBD)
- 25 - 27 IMEA 212 Transformer Theory & Connections (Scottsburg)



**Register Today! [www.imea.com / workshops](http://www.imea.com/workshops)**



Automated  
Energy

**Boosting the brain power of the smart grid™**

## Here for Indiana

Let Automated Energy help you further leverage your AMI investment with our industry-leading Customer Engagement Applications.

Whether you need Residential and Small Commercial customer engagement tools or powerful load profile analytic tools for your Large C&I customers, Automated Energy has what you need!



**Better power through better data**

Call Cody Graves at **866-421-1234** or  
email at **[cgraves@automatedenergy.com](mailto:cgraves@automatedenergy.com)**



# Benefits of Municipal Utilities

Indiana is home to municipal utilities of many shapes and sizes. Indiana is one of 49 states with public power systems. Public Power has close to a 125-year tradition of service in Indiana. Of the state's 568 municipalities, 72 own and/or operate their electric utility. The majority of Indiana's public power systems have celebrated their centennial. More than 500,000 Hoosiers own, control and are serviced by their municipal electric utility.

There are over 2,000 public power communities across the nation. One out of seven Americans are served by a public power community. Public power utilities are public service institutions whose primary focus is to serve their customers. Their common purpose is to provide reliable and safe not-for-profit electricity at a reasonable price while protecting the environment. The hallmark of public power is local control where citizens have a direct and powerful voice in utility decisions and policies.

Indiana has a long history of municipal utility operation. When private business would not or could not serve the utility needs of its citizens, city governments stepped up to provide essential utility needs – electric, gas, water, wastewater, stormwater and telecommunication services.

These community-owned utilities are municipal by choice.

The benefits of municipal utility ownership are numerous. From small, rural towns to large cities, municipal utilities are the culture of that particular American vision of local communities working together to meet the needs of their local citizens.

## **Community Ownership**

A municipal utility is owned by the city or town it serves. It exists to provide a public service to the citizens, businesses and industries of the community. Service, not profit, is the utility's mission / priority goal.

## **Community Values**

Decisions about the operation of a municipal utility are made locally, by members of the community, at open, public meetings. Because all decisions are made locally, a municipal utility is uniquely able to respond to the community's needs, build on the community's strengths, and reflect and advance the community's values.

# TRANSFORMERS

## DISTRIBUTION AND SUBSTATION



# T&R ELECTRIC

SUPPLY COMPANY, INCORPORATED

BOX-180

COLMAN, SOUTH DAKOTA 57017

"THE TRANSFORMER PEOPLE"®



**Modern Rewind Facilities**  
**More than 61 Acres Inventory**  
**Prompt Delivery—Coast to Coast**

**CALL TOLL-FREE**  
**800-843-7994**  
**FAX 605-534-3861**  
**E-Mail: [t-r@t-r.com](mailto:t-r@t-r.com)**  
**Internet: [www.t-r.com](http://www.t-r.com)**



**BUY - SELL - RENT**

**Complete Outdoor**  
**Substations,**  
**Circuit Breakers,**  
**Regulators,**  
**and Switchgear**



## Discover the Hometown Connections Smart Cities Advantage

Hometown Connections, Inc., is a non-profit utility services organization specializing in the unique challenges facing community-owned utilities. For more than 20 years, our expert team has helped over 900 utilities to modernize their processes and systems.

Hometown Connections offers solutions for all areas of your utility business:

- Operations
- Cybersecurity
- Business Strategy
- Customer Care
- Finance
- Workforce

*Work with a team that puts your best interests first.*

—  
Leading community-owned utilities to a powerful future



12081 W. Alameda Parkway, # 464  
Lakewood, CO 80228  
P — 970 682 4217  
[www.hometownconnections.com](http://www.hometownconnections.com)





## ***Preparing for the Future Careers in Public Power***

Hiring and retaining reliable employees is becoming more and more difficult in today's competitive market. Have you considered exposing high schoolers in your Community to a career in Public Power? There are no guarantees; however, hiring local increases the odds that you will retain that employee.

Nearly 75% of all high school students have a difficult time choosing a career path prior to graduation. What if you made their decision just a little bit easier by providing a career day at your utility. Communities around the nation are approaching High Schools to share just what it takes to light the nation by "hosting a day in the life of a lineman". These particular programs provide students with a hands-on look at the industry and the chance to hear from linemen about the challenges and joys of their chosen vocational path.

Many can earn over \$60,000 a year, without earning a four-year college degree. That's a realistic expectation. This is where you will see a few eyes light up. The trades got a bad rap for the last few decades. People thought that to be successful you had to go to college, get a desk job and ride it out until retirement. However, when the economy tanked, and those jobs disappeared, workers started looking around for an alternative. What they found was that jobs in the skilled trades are always in demand and pay great.

We want students to know that they have other options, such as working for their local municipality and going through the IMEA Apprentice Lineman Program and working up to a salary that's lofty by many rural standards.

If you would be interested in hosting a career day at your utility or would like to attend a career day at your local school the IMEA Staff would be happy to assist and even participate in the events.



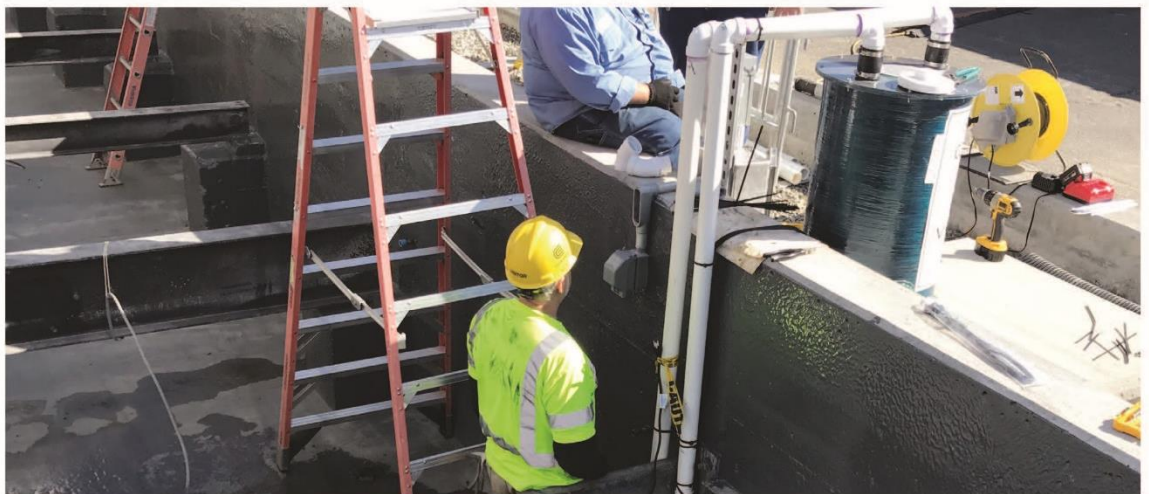
## **NEED A TRANSFORMER SOLUTION? WE SAY YES!**

We specialize in fast turn around on refurbished and new transformers, regulators and reclosers. Our engineering and field service staffs offer custom solutions for unique circumstances. **Call 24/7/365!**



Mike Steward | Account Manager | [mike.steward@sunbeltsolomon.com](mailto:mike.steward@sunbeltsolomon.com) | C:1260.341.4729  
Paige Aylward | Sales Support | [paige.aylward@sunbeltsolomon.com](mailto:paige.aylward@sunbeltsolomon.com) | C:1785.577.3786







# IMEA

## ANNUAL MEETING & VENDOR EXPO

---

2022

OCTOBER 11 - 13, 2022

THE FUTURE OF MUNICIPALS IN THE PUBLIC POWER INDUSTRY

LEADERSHIP. INNOVATION. COLLABORATION

*Registration is Coming in  
May 2022!*



HAVING REPRESENTATION FROM EACH MUNICIPAL MEMBER OF THE IMEA ORGANIZATION IS IMPERATIVE FOR SUSTAINABILITY AND MEMBER ENGAGEMENT. WE ENCOURAGE YOU TO ATTEND AND UTILIZE THESE OPPORTUNITIES TO IMPROVING YOUR SKILL SET, CREATING BETTER EMPLOYEE COMMUNICATION AND LEARNING ABOUT THE SUCCESSES OF OTHERS AND APPLYING THEM TO YOUR WORKPLACE.

**Come share in networking with your neighboring utilities as well as taking part in our vendor expo offering the best in state-of-the-art products and services!**

# COMPLIANT GRAPHICS FOR HARSH ENVIRONMENTS



(610) 857-2655  
graphics@uticom.net  
**uticom.net**